



***motoalliance***

23001 Industrial Blvd, Rogers, MN 55374 / 1-866-527-7637  
www.motoalliance.com

## **MotoAlliance Winch Mount**

**MA11929**

### **Yamaha Viking / Wolverine**

Thank you for purchasing our MotoAlliance winch mount(s). You now own a premium custom winch mount which allows you to use your winch with your UTV / SxS. Please note the following instructions and heed all warnings:

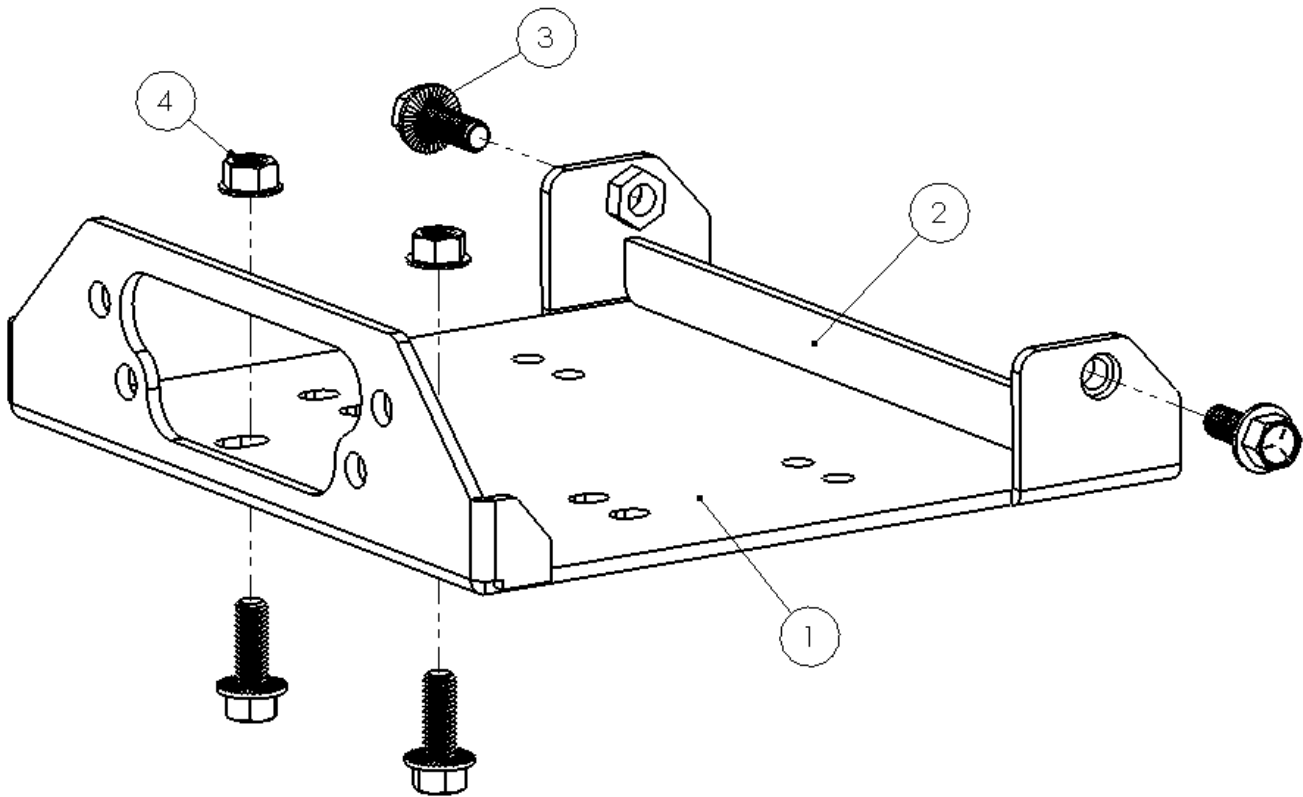
- Please use common sense when operating your UTV / SxS
- Read your Winch Operators Manual and all other Operator Manuals including warning labels, before operating your UTV / SxS
- Be observant of moving parts causing entanglement; use extreme caution!

**SEVERE INJURY OR DEATH MAY RESULT IF YOU ARE NEGLIGENT.**

Please verify that all hardware and parts are included in your package.

**Kit Content:**

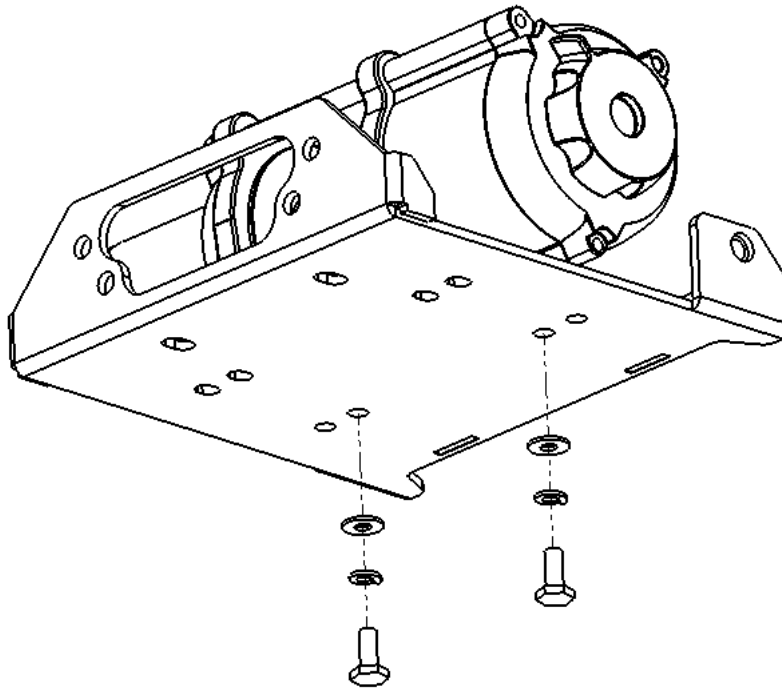
Item	Description	QTY
1	Winch Mount Base Plate	1
2	3/8"-16 x 1" Serrated Flange Bolt	4
3	3/8"-16 Serrated Flange Nut	2



**MA11925 Winch Mount Assembly View**

## Yamaha Wolverine Installation

- 1) Locate the winch mounting hardware included in the winch kit and mount the winch to the Winch Mount Base Plate using only the back two bolt holes as shown in Figure 1. VIPER winches include two sets of M8 hardware, one that is 20mm long and one that is 25mm. Use the 20mm set, lock washers and flat washers.



**Figure 1**

2. Slide the winch and mount assembly over the bumper with the motor end going in first as shown in Figure 2.



**Figure 2**

3. Insert the remaining two M8 hex bolts, lock washers and flat washers through the bumper and into the front bolt holes of the winch as shown in Figure 3.



Figure 3

## Yamaha Viking Installation

4. Insert the two 3/8"-16x1" Serrated Flange Bolts into the mount plate sides walls and tighten as shown in Figure 4.

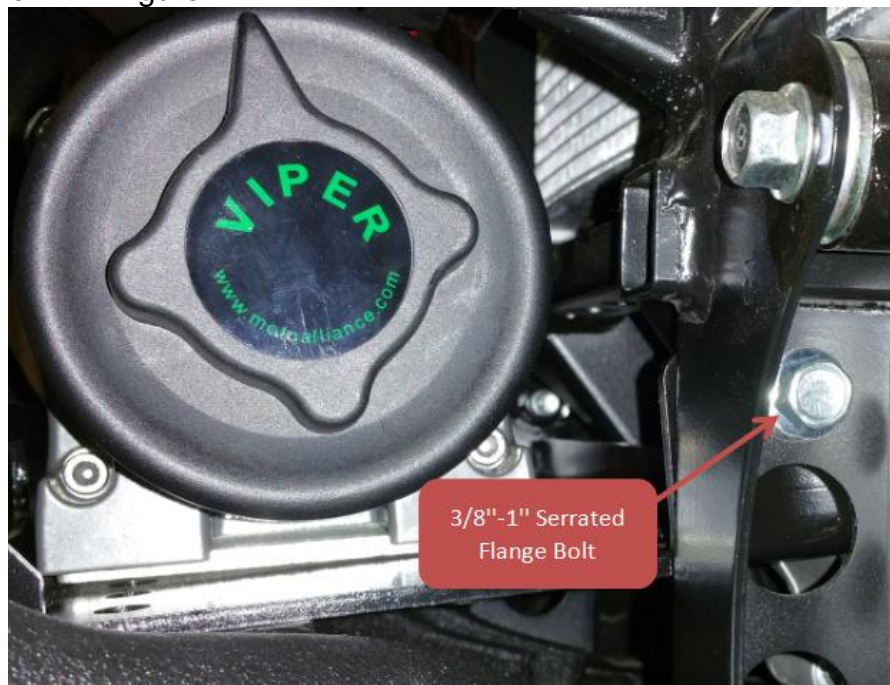


Figure 4

**Winch Wiring - NOTE: When working with your vehicle's electrical system, always disconnect the negative battery terminal and secure the negative battery cable away from the battery.**

5. Hold the winch contactor up to the outside of the electrical enclosure and mark the hole centers of the mounting tabs. Verify that nothing is attached to the back side of the electrical enclosure behind the contactor. Drill clearance holes slightly larger than the contactor hardware in the winch kit.
6. Mount the contactor to the outside of the electrical enclosure using the hardware included in the winch kit.
7. Attach the power cables according to the winch manufacturer's wiring diagram. Reconnect the battery terminals and test that the winch operates. If the direction of the winch is reversed, switch the power cables at the winch.
8. Mount the winch fairlead to the fairlead attachment points and install cable under load.



Figure 5